



1955 Thatch Palm Drive | Boca Raton, Florida



Office (561) 368-6200

[www.RoyalPalm.com](http://www.RoyalPalm.com)

Golf Course Estate

INTERIOR FEATURES

- Light and bright single-story courtyard home completely renovated with a split bedroom floor plan
- Foyer has double glass door entry and custom lighting
- Marble floor, oversized moldings, volume ceilings, and custom mill-work throughout
- Formal living room with coffered ceilings, surround sound speakers, gas fireplace with white wood mantle, electric window treatments, and sliders with panoramic views of the golf course
- Formal dining room with coffered ceilings, custom chandelier with medallion covering, white mill-work detailing, and two custom fluted windows
- Bedroom/Den with coffered ceiling, custom lighting, wood floors, floor to ceiling shelving, and a custom built-in Murphy bed with inset TV
- Family room opens to the breakfast dining area and kitchen, with lux metallic wallpaper, recessed lighting, surround sound speakers, mounted TV, electric window treatments, and large sliders to the pool area
- Separate cabana guest house with marble floors, tray ceilings, recessed lighting, ensuite cabana bath, and French doors to the pool deck

GOURMET KITCHEN & LAUNDRY

- Large white kitchen with marble counters and backsplash, custom wood cabinets, premium appliances, contrasting center work island with gas cook-top and storage, pendant lighting, counter height breakfast bar seating, and walk-in pantry
- Premium appliances: Thermador refrigerator and freezer, two wall-mounted ovens, Jenn-Air 4-burner gas cook-top, Bosch dishwasher, and U-Line wine refrigerator
- Separate breakfast dining area wrapped in views of the pool with custom chandelier
- Deluxe laundry room with LG washer and dryer, sink, granite counters, marble backsplash, and storage

MASTER SUITE & BATH

- Spacious master suite with hardwood floors, electric window treatments, mounted television, double tray ceiling, surround sound speakers, and large sliders to the pool deck
- Master bath has a custom frosted glass sliding barn door, white solid stone floors and counters, double vanity with make-up area, custom lighting, wet room with stand-alone tub, rainfall fixture, marble mosaic tiles, and private water closet
- Open concept walk-in closet with custom built-ins and railings for the sliding ladder

EXTERIOR FEATURES

- Panoramic views of the Jack Nicklaus 12th fairway
- Heated and private courtyard pool with custom fountain and travertine pool deck
- Covered loggia, with exterior speakers, mounted TV with Sonos sound bar, and wood ceiling
- Fully-equipped summer kitchen with DCS BBQ, additional gas burners, Monogram refrigerator, sink, storage, and granite counters
- Tropical landscaping in planter beds and planters
- Backyard has Pergola with a large dining area and views of the 12th fairway
- Artificial turf front yard
- Travertine stone circular driveway
- Private garden outside the master bath

ADDITIONAL FEATURES

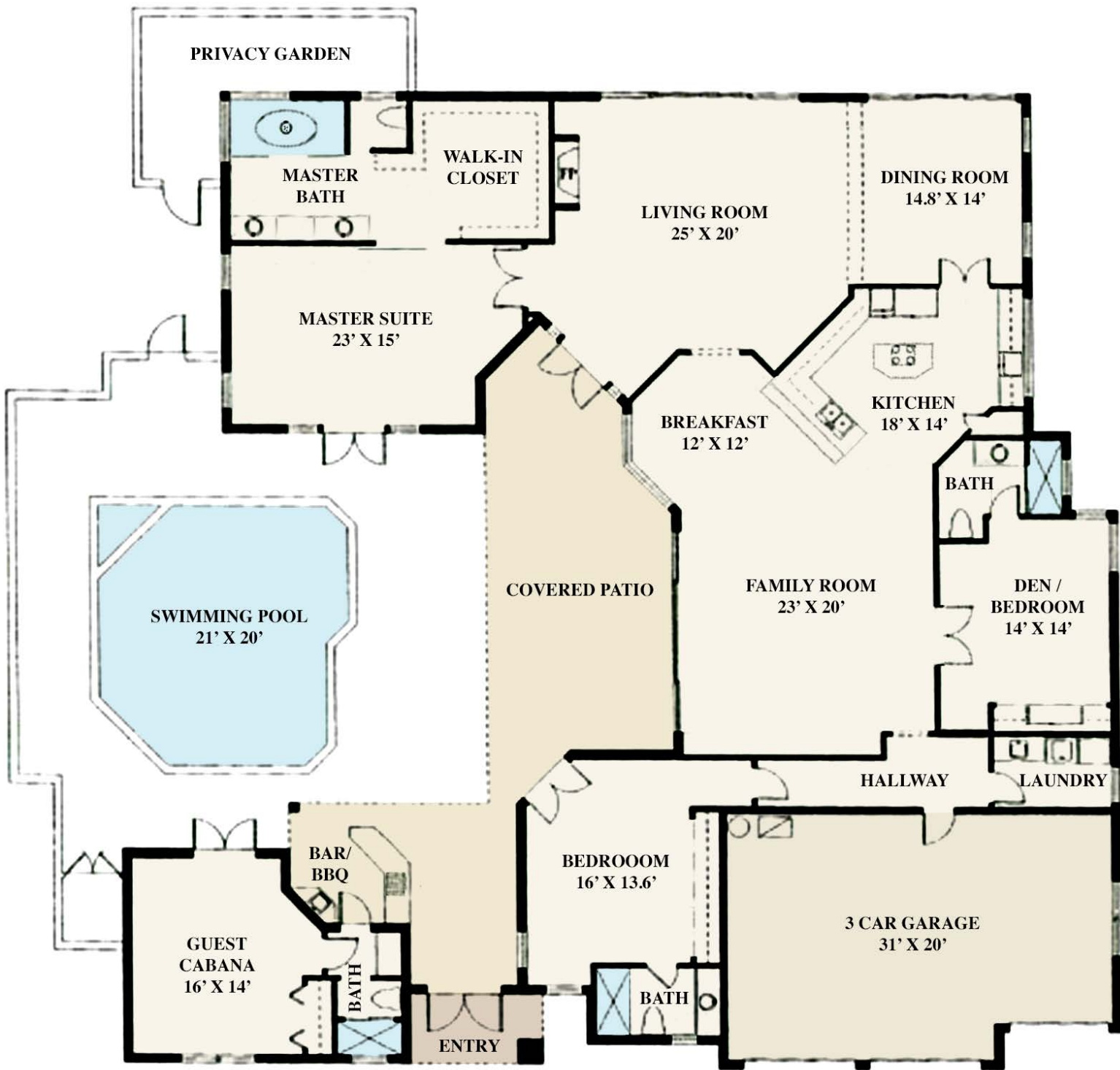
- Impact glass windows and doors
- 3-zone A/C (all replaced in 2012)
- 2 tankless water heaters
- Full-house gas generator
- Propane gas installed for stove, dryer, grill, water heaters, and generator
- S-tile roof
- Security system with alarm and cameras
- Central Vacuum





The only real estate firm dedicated exclusively to Royal Palm Yacht & Country Club

1955 Thatch Palm Drive



Golf Course Estate

BEDROOMS	4
BATHROOMS	4
YEAR BUILT	1994
LOT SIZE	100' X 130' X 106' X 130'
LIVING SQ. FT.	3,443 SQ. FT.
TOTAL SQ. FT.	4,811 SQ. FT.
GARAGES	3

NOTE: All measurements, features and specifications are approximate. The accuracy of this information is subject to errors, omissions and changes. An architect should be contacted for actual measurements, features and specifications. Not intended to solicit another Broker's listing. Royal Palm Properties, Licensed Real Estate Brokers.