

Royal Palm Yacht & Country Club



272 Thatch Palm Drive | Boca Raton, Florida



Office (561) 368-6200

P R O P E R T I E S

www.RoyalPalm.com

Golf Course Estate

INTERIOR FEATURES

- Solid wood double door entry with decorative glass inset windows
- Foyer entry with arched walkthrough
- Volume ceilings and recessed lighting
- Marble tile floors and base trim
- Formal living room with cast stone columns and French doors opening to golf views
- Dining room has an elegant chandelier and French doors opening to a large screened patio
- Family room opens to the kitchen, and has French doors leading to a screened patio
- Spacious second-floor loft living room with golf and pool views
- Two second floor golf-view bedrooms, one has a private balcony and spiral iron staircase to the ground level

GOURMET KITCHEN & LAUNDRY

- Large kitchen with wood cabinetry, solid-surface counters, two peninsulas, and a center island
- Center island has sink, power, and additional storage
- Premium stainless steel appliances include Sub-Zero refrigerator/freezer, Viking gas range, Rangemaster hood, and Electrolux dishwasher
- Eat-in breakfast dining has golf course views and French doors opening to two separate screened patios
- First-floor laundry room has washer and dryer, sink, ample storage, additional refrigerator, and writing desk

MASTER SUITE & BATH

- First-floor master has custom wood built-in cabinetry and desk and French doors leading to a private master patio overlooking the golf course
- Sunlit Master bath features jetted bathtub, separate walk-in shower, marble tile flooring, full mirror wall upon a built-in vanity with dual sinks, a high dome ceiling, linen closet and privacy wall separating the commode and bidet
- Separate his and hers walk-in closets; her closet functions as a glamorous dressing suite, connecting to the bathroom via a private vanity room with floor to ceiling mirrors, custom Ivory built-in cabinetry with gold and silver hardware, makeup counter and her sink

EXTERIOR FEATURES

- Half-acre lot uniquely appointed with only one neighbor and 212 feet on the golf course
- Large heated freeform pool with brick coping and natural stone pool deck
- Hot tub with pergola covering
- Outdoor kitchen with DCS BBQ, sink, storage and granite countertops
- 2 screened lanais open to the pool and yard
- Large backyard with lush tropical landscaping
- Covered and gated storage space
- 2-car garage with storage
- Front circular, brick paver driveway

ADDITIONAL FEATURES

- Rolladen electric and manual hurricane shutters
- 3-zone air conditioning with Pro thermostats
- Security system with alarm and motion lights
- S-tile roof
- Interior and exterior speakers
- Central vacuum

COMMUNITY FEATURES

- 24-Hour Security
- Jack Nicklaus Signature golf course
- World-class yachting facility
- Conveniently located, minutes to downtown Mizner Park and walking distance to the beach and Boca Resort & Club
- Royal Palm Yacht & Country Club is the most sought-after community in all South Florida since 1959



Presented Exclusively By

David W. Roberts - Broker/Owner



P R O P E R T I E S

Office (561) 368-6200

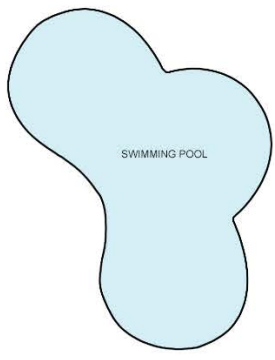
www.RoyalPalm.com

The only real estate firm dedicated exclusively to Royal Palm Yacht & Country Club

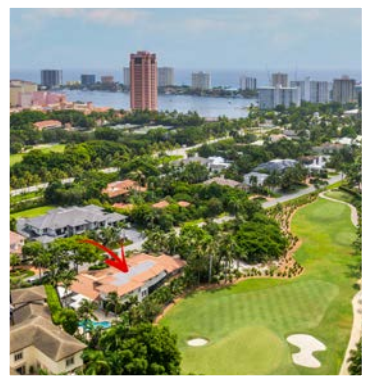
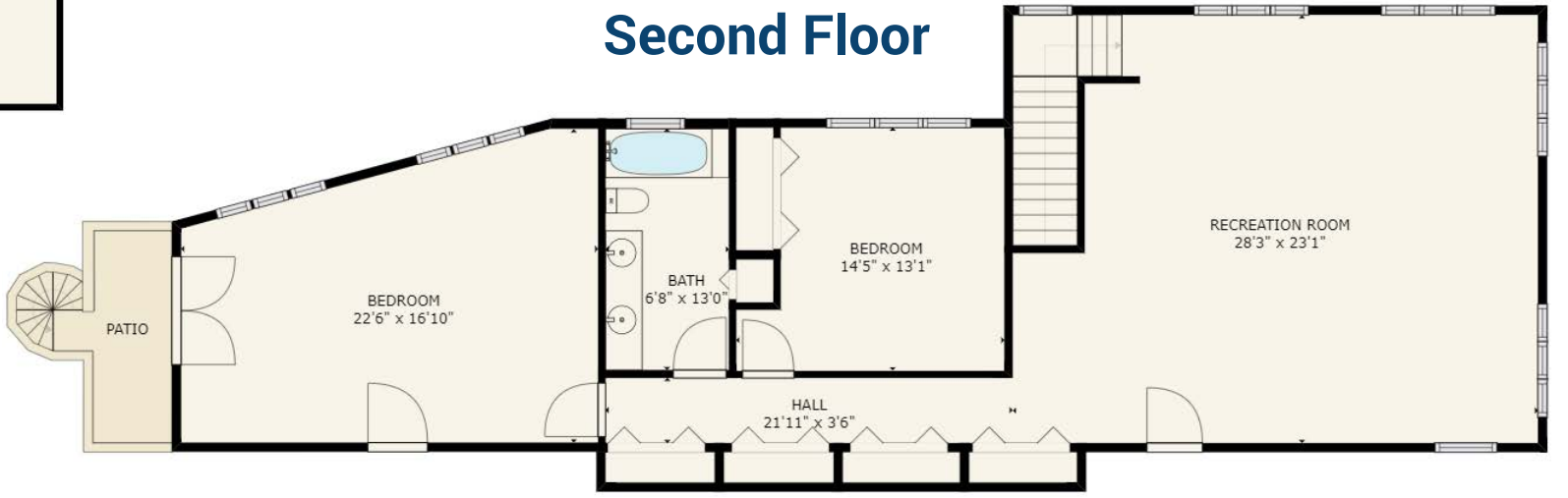
272 Thatch Palm Drive

SPA

First Floor



Second Floor



 Golf Course Estate 1.5 GOLF COURSE LOTS	
BEDROOMS	6
BATHROOMS	5 FULL & 1 HALF
YEAR BUILT	1995
LOT SIZE	150' X 93' X 212' X 176'
LIVING SQ. FT.	7,334 SQ. FT.
TOTAL SQ. FT.	9,240 SQ. FT.
GARAGES	2

NOTE: All measurements, features and specifications are approximate. The accuracy of this information is subject to errors, omissions and changes. An architect should be contacted for actual measurements, features and specifications. Not intended to solicit another Broker's listing. Royal Palm Properties, Licensed Real Estate Brokers.