

Royal Palm Yacht & Country Club



329 Royal Palm Way | Boca Raton, Florida



Office (561) 368-6200

www.RoyalPalm.com

Golf Course Estate

INTERIOR FEATURES

- Updated split floor plan 4 bedroom plus library golf course estate
- Covered entry with a custom glass and wrought iron solid wood door and oversized transom
- Elegant foyer with marble landing and see-through views of the pool
- Winding wood stairway with carpet runner and wrought iron and wood railing
- Volume ceilings and generous moldings throughout
- First floor marble flooring; Second floor Brazilian Cherry
- Formal living room has a two-story stone surround fireplace, statement chandelier, and views of the pool
- Library with custom wood built-ins, fireplace, glass privacy French doors, and access to the master suite
- Formal dining room has marble floors, designer chandelier, and a built-in buffet
- Theater room features a JVC projector with movie screen, wine bar, and custom sound-proofing
- Temperature-controlled wine room features marble floors, glass enclosure, and ample bottle storage
- Family room has built-in media unit, French doors to the terrace, and opens to the kitchen for easy entertaining
- Large second-floor guest room with en suite bath and private balcony enjoying golf and pool views

GOURMET KITCHEN & LAUNDRY

- Newly updated Chef's kitchen with white veneer cabinets, Quartz counters, wine room, and coffee bar
- Large island with waterfall edge, has breakfast bar seating, additional sink, and 2 designer chandeliers
- Top-of-the-line stainless steel appliances include: SubZero refrigerator/freezer, Wolf 6 burner plus griddle gas range, dual wall ovens, and Kitchen-Aid dishwasher
- Breakfast dining area with painted tray ceilings, chandelier and bay window with pool views
- Deluxe laundry room with Samsung washer/dryer, sink, marble counters, garment rack, and ironing board

MASTER SUITE & BATH

- First-floor master suite with double door entrance, large seating area overlooking the pool, custom millwork ceiling, sealed engineered wood floor, and stunning atrium with fountain
- Master bath features separate His & Her baths; Hers with custom wood vanity, Bainultra spa tub, walk-in shower, private water closet. His with custom vanity, walk-in shower with partial glass curtain, private water closet
- Three walk-in closets with wood built-ins and storage

EXTERIOR FEATURES

- 104' on the Jack Nicklaus Signature 1st fairway
- Heated saltwater pool with travertine deck, raised stone spa, and tiered cascading water features
- Tropical landscaping and lighting professionally installed
- Covered terrace with large seating/dining space, outdoor speaker, and ceiling fan
- 2-car plus golf cart garage with motor court driveway

ADDITIONAL FEATURES

- 4-zone air conditioning with digital thermostats
- Security system with alarm, motion sensors, and exterior spotlights
- Natural gas to appliances and utilities
- Impact glass windows and doors
- Concrete tile roof (2021)
- Freshly painted exterior (2021)
- Electric shades in the family room
- Ceiling speakers located in the master suite, living room, family room, and terrace
- 2 water heaters
- Dedicated water heater to the master suite
- Elevator with raised wood paneling
- Central vacuum



Presented Exclusively By

David W. Roberts - Broker/Owner

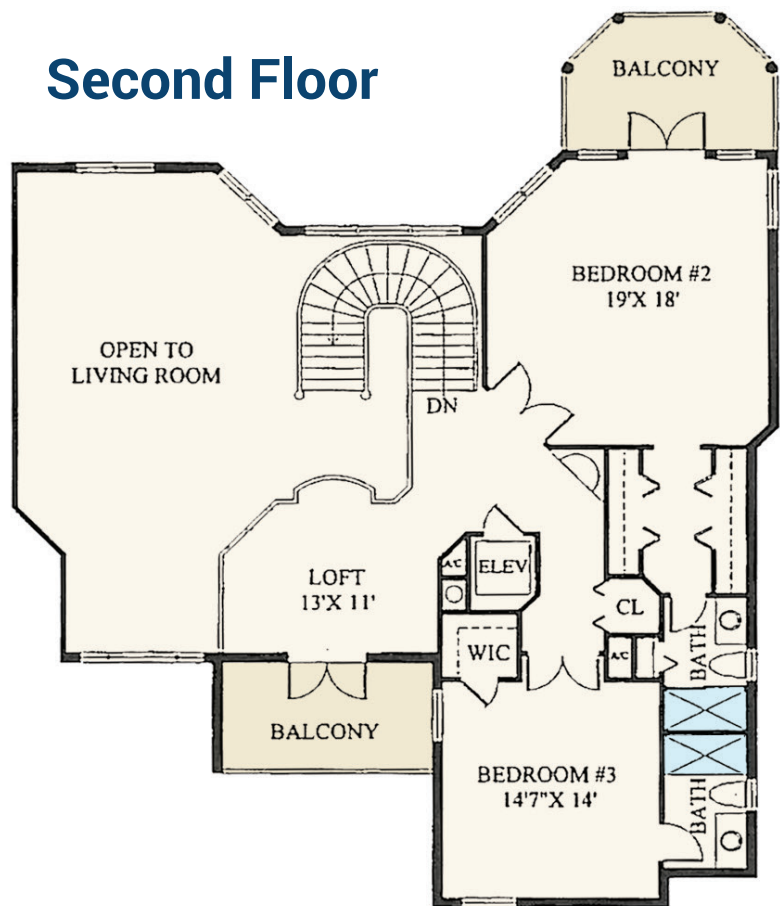
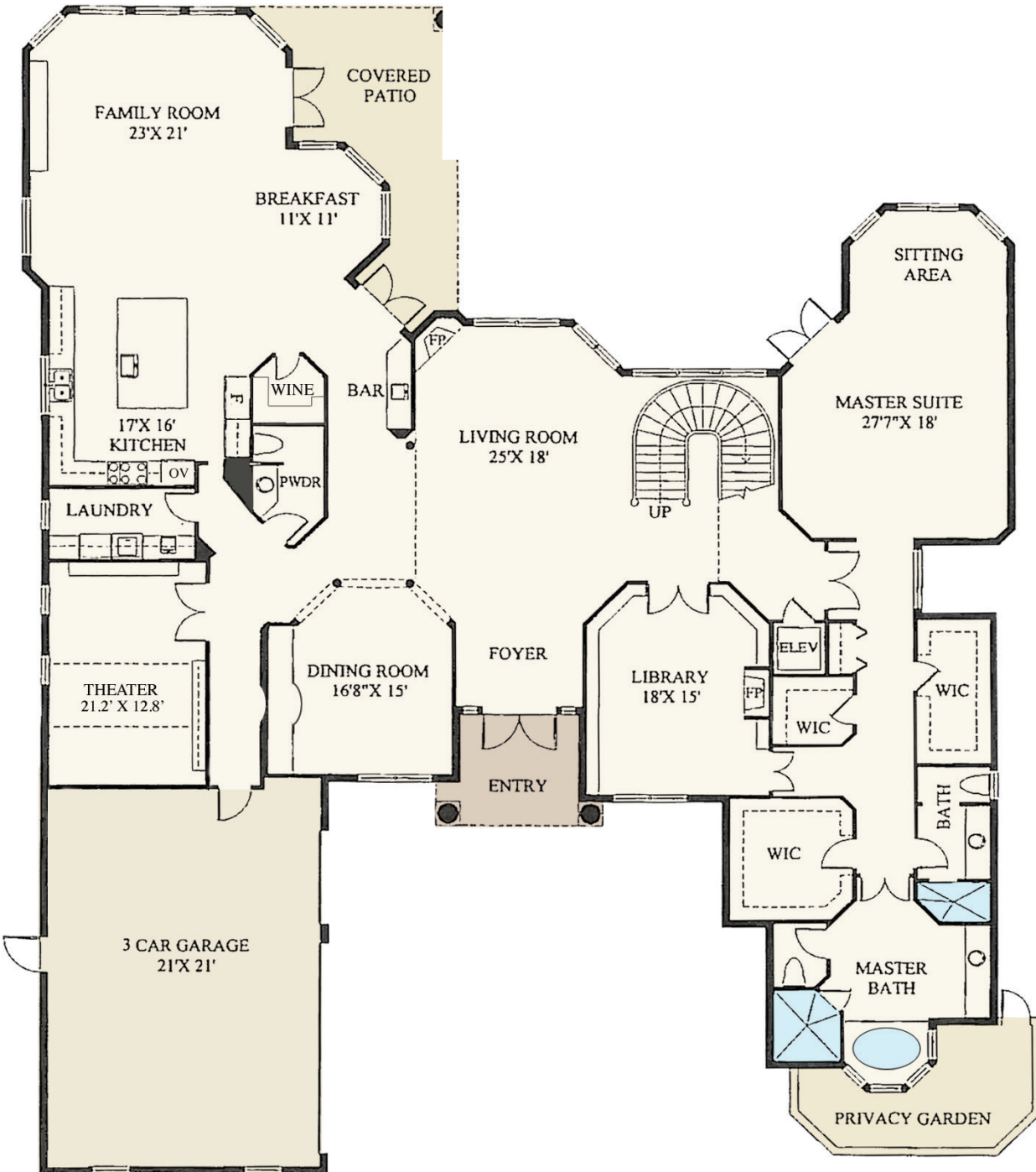


Office (561) 368-6200

www.RoyalPalm.com

The only real estate firm dedicated exclusively to Royal Palm Yacht & Country Club

329 Royal Palm Way



 Golf Course Estate	
BEDROOMS	4 + LIBRARY
BATHROOMS	4 FULL & 1 HALF
YEAR BUILT	1997
LOT SIZE	95' X 150' X 104' X 150'
LIVING SQ. FT.	5,548 SQ. FT.
TOTAL SQ. FT.	6,673 SQ. FT.
GARAGES	3

NOTE: All measurements, features and specifications are approximate. The accuracy of this information is subject to errors, omissions and changes. An architect should be contacted for actual measurements, features and specifications. Not intended to solicit another Broker's listing. Royal Palm Properties, Licensed Real Estate Brokers.