

Royal Palm Yacht & Country Club



282 Princess Palm Road | Boca Raton, Florida



Office (561) 368-6200

www.RoyalPalm.com

Interior Estate

INTERIOR FEATURES

- Five bedrooms plus bonus room, six full baths, and one powder room
- Grand foyer entry with marble flooring
- Volume ceilings, custom trim, and 8-foot panel doors
- Winding marble stairway and bridge with decorative wrought iron railing
- Private library with solid wood floors and custom built-in shelves and desk
- Formal living room with stone gas fireplace overlooking the summer room
- Formal dining room with painted tray ceiling, hand-carved applique, and pool views
- Walk-in, temperature-controlled wine cellar with cedar racking and brick ceiling
- Large family room opens to the kitchen and has French doors opening to the summer room
- First-floor bonus room with ensuite cabana bath
- Second-floor loft living room with French doors opening to a balcony with spiral staircase leading to the summer room
- Four second-floor guest suites, each with a balcony
- Elevator with raised mahogany panels

MASTER SUITE & BATH

- First-floor master wing has wood floors and french doors opening to the pool deck
- Spacious master bath has custom wood vanities with marble countertops, marble floors, designer fixtures, and private water closets - hers with a bidet
- Jacuzzi spa tub for two and large frameless glass walk-in shower
- Large His & Her walk-in closets with custom built-ins

GOURMET KITCHEN & LAUNDRY

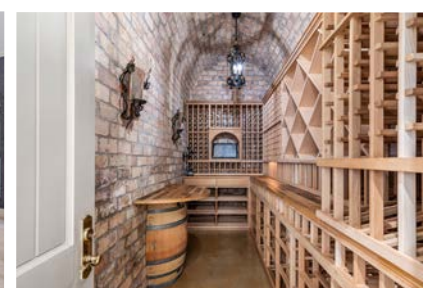
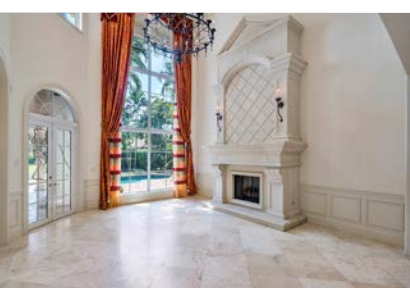
- Large gourmet kitchen features dual contrasting center islands, custom wood cabinets, Kraus fixtures, quartz slab backsplash, feature metal hood, beverage center, floating shelves, and hidden walk-in pantry
- Floor-to-ceiling cabinetry with rolling hook ladders
- Premium appliances include SubZero refrigerator/freezer, La Cournue gas range with ovens, U-line wine refrigerator, and dual KitchenAid dishwashers
- Beverage center with sink and storage
- Separate breakfast dining area with pool views
- Deluxe first-floor laundry room with LG washer/dryer, granite countertops, sink, and cabinet storage

EXTERIOR FEATURES

- Rare half-acre interior double lot with rear south exposure
- Elegant Mediterranean-inspired architecture
- Interlocking brick paver circular driveway and patios
- Heated pool with swim out bench and separate spa
- Summer room has Cypress wood ceilings, fireplace, and exterior speakers
- Spiral staircase leads to a massive open balcony
- Solid mahogany front door with glass transoms
- S-tile roof

ADDITIONAL FEATURES

- Impact glass windows and doors
- Security system with camera, alarm, and motion lights
- Kohler natural gas generator
- 3-car garage with air conditioning
- 3-zone air conditioning with digital thermostats and tinted windows
- Upgraded insulation installed throughout
- Central vacuum



Presented Exclusively By

David W. Roberts - Broker/Owner

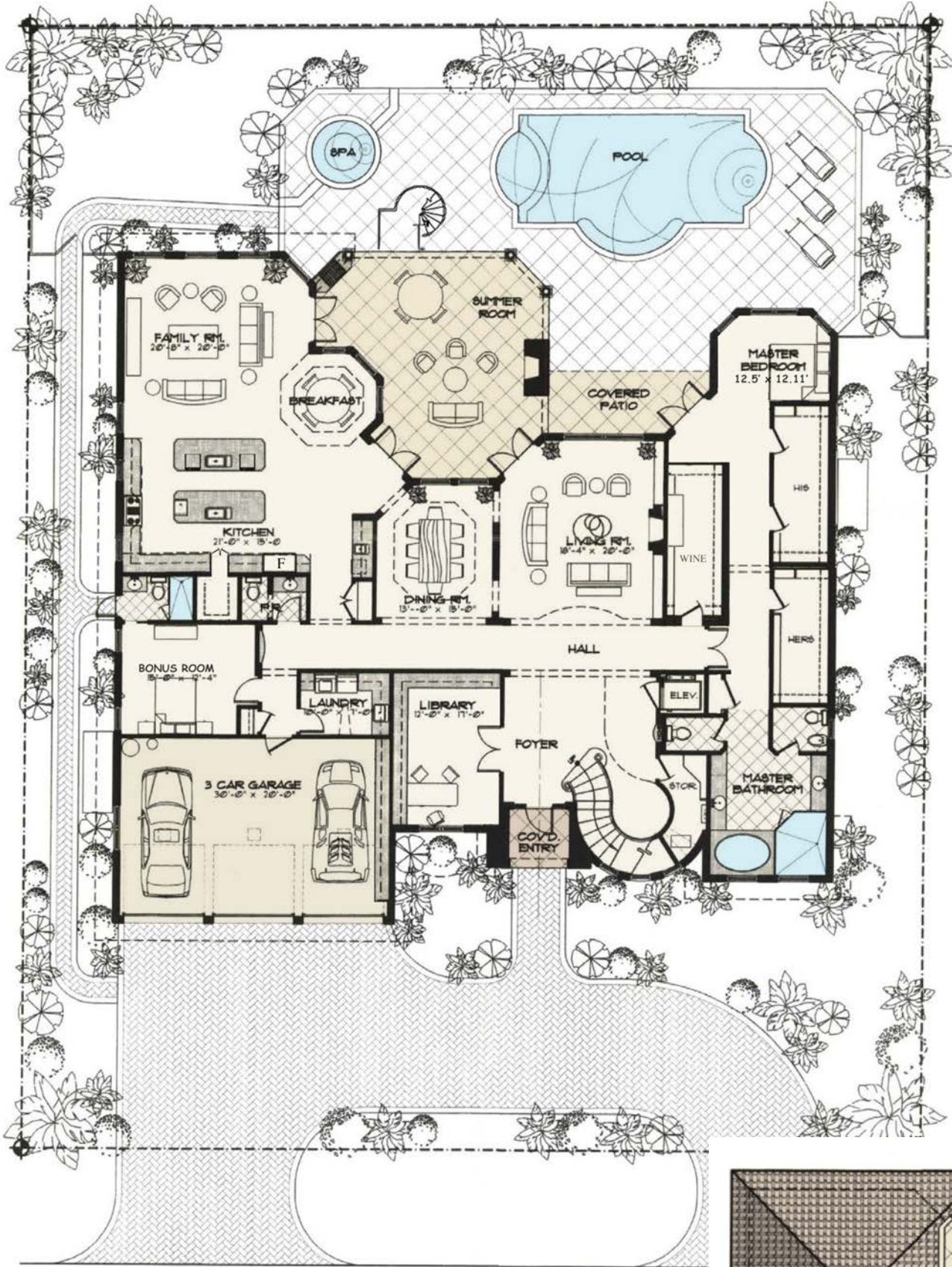


Office (561) 368-6200

www.RoyalPalm.com

The only real estate firm dedicated exclusively to Royal Palm Yacht & Country Club

282 Princess Palm Road



 Interior Estate	
BEDROOMS	5
BATHROOMS	6 FULL & 1 HALF
YEAR BUILT	2005
LOT SIZE	100' x 125' x 100' x 125'
LIVING SQ. FT.	6,178 SQ. FT.
TOTAL SQ. FT.	7,694 SQ. FT.
GARAGES	3

